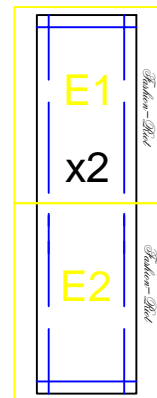
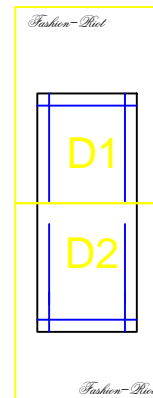
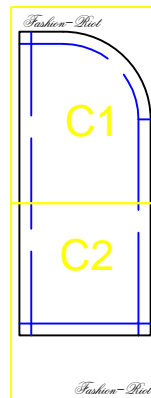
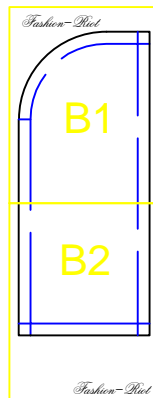
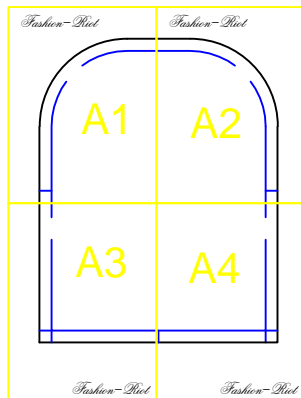
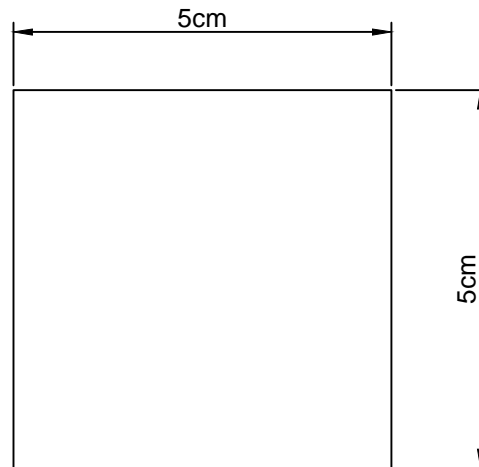


Fashion-Riot

Instrucciones:

- * Imprimir los patrones en hojas tamaño carta.
- * Al imprimir con Adobe, elegir "Tamaño actual/Actual Size" para que no se escalen las hojas.
- * Usar el cuadro de 5cmX5cm de estas instrucciones para comprobar la escala.
- * Recortarlos y unirlos como se muestra en la figura.

Muchos besitos y suerte con el DIY!



Fashion-Riot

A1

Fashion-Riot

A2

A technical drawing of a pattern piece labeled 'A2'. It features a solid black outer boundary and a dashed blue inner boundary. The top edge is a quarter-circle arc. The right edge is a vertical line that meets a small square notch at the bottom. The bottom edge is a horizontal line that meets the vertical line at the notch. The text 'A2' is printed in a large, bold, yellow font in the center of the pattern.

A3

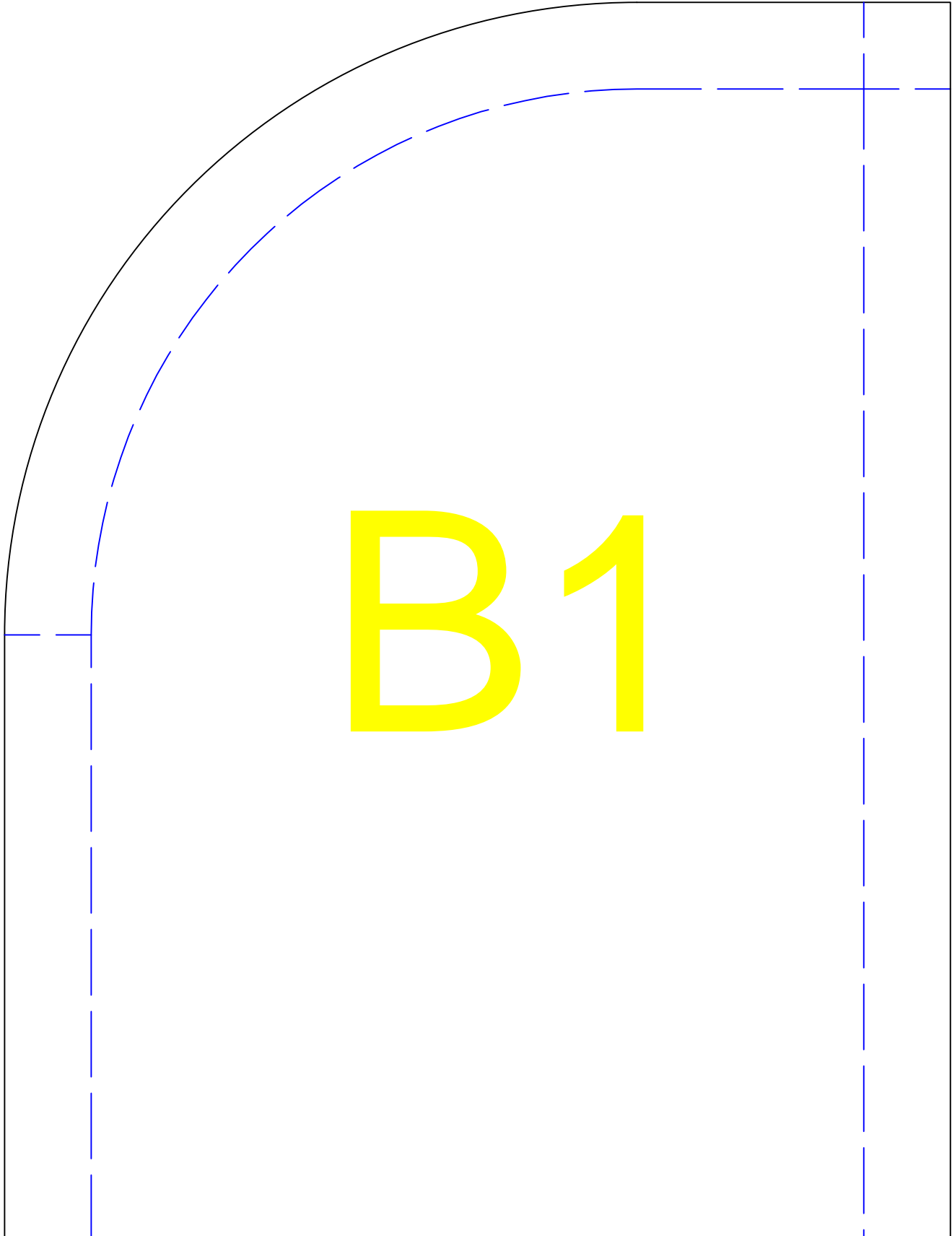
Fashion-Riot

A4

Fashion-Riot

Fashion-Riot

B1

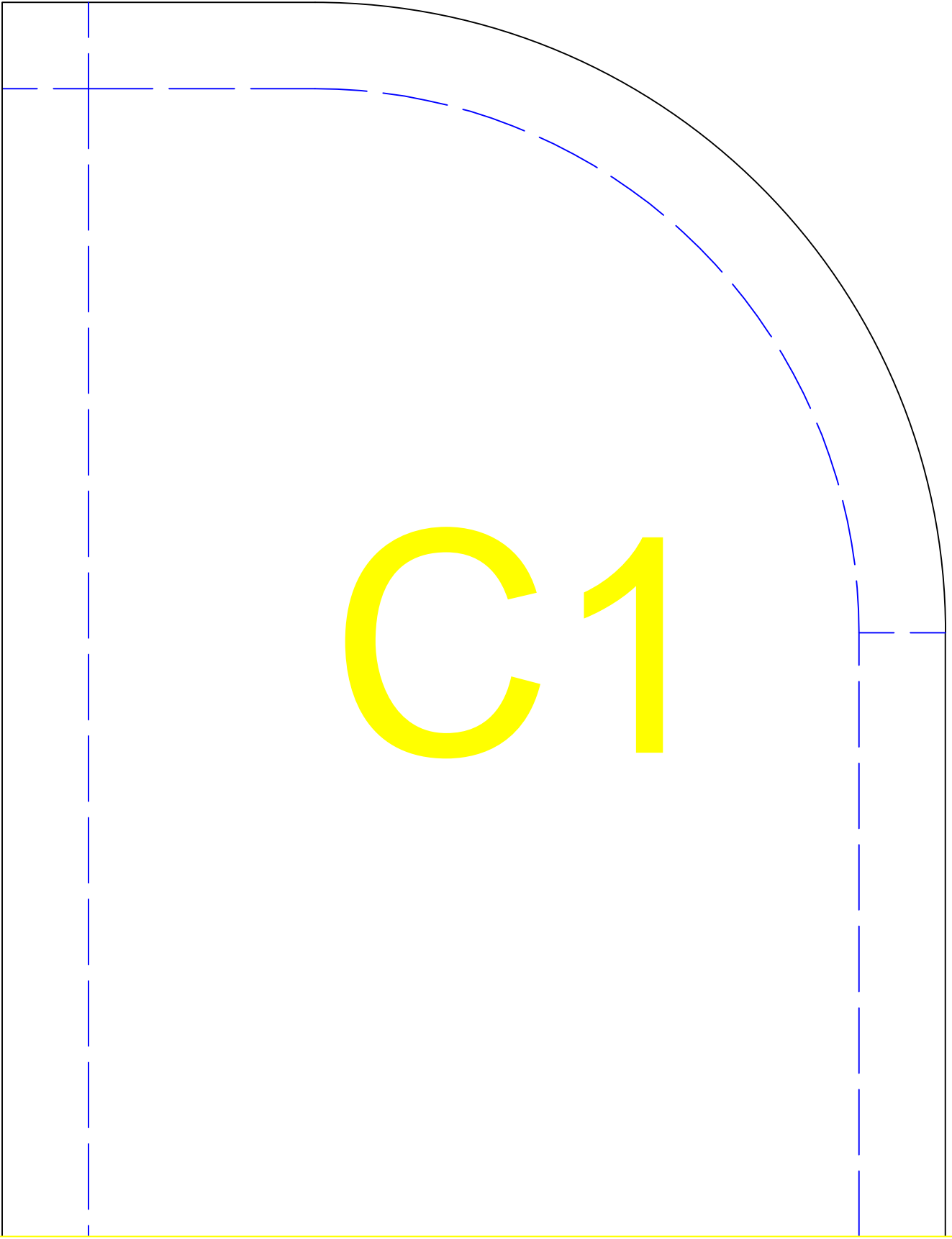


B2

Fashion-Riot

Fashion-Riot

C1



C2

Fashion-Riot

Fashion-Riot

D 1

D2

Fashion-Riot

x2

E1

Fashion - Riot

Fashion – Diet

E 2